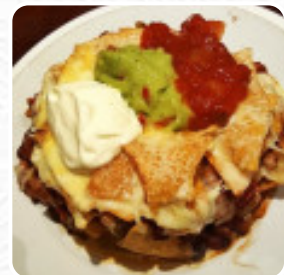




Salsa Menu

<https://menuweb.menu>

34 London Road, Southend-on-Sea, United Kingdom
+441702213000 - <http://www.salsatapas.co.uk/>



On this site, you will find the **complete [menu](https://menuweb.menu) of Salsa** from Southend-on-Sea. Currently, there are **57** dishes and drinks available. Salsa Restaurant and Tapas Bar is one of the largest family-run venues in South-East Essex. Established in 2009, it is the ideal spot for family meals and parties. Salsa is known for its commitment to quality, using fresh produce from local markets and importing speciality ingredients from Portugal and Spain. Over 50% of the menu is dedicated to Espetadas, Tapas, Paellas, and more. From Traditional Homemade Chilli con Carne to succulent Full Rack of Ribs, Salsa offers a delicious range of options for all tastes.

Salsa Menu



Alcoholic Drinks

SANGRIA

Sushi Rolls

SUSHI

Seafood

CALAMARI

Meat Dishes

MEATBALLS

Drinks

DRINKS

Chicken

CHICKEN WINGS

Sauces

SALSA

Appetizer

TEMPURA

Dessert

CHEESECAKE

From The Grill

RIBS

Tapas

PATATAS BRAVAS

Chicken Wings

WINGS

Fried Rice

FRIED RICE

Bread

BAGUETTE

Sides

GARLIC BUTTER

Latin American Food

PAELLA

Main Courses

LASAGNA

NACHOS

Side Dishes

RICE

POTATO SKINS

Mexican Dishes

BURRITO

ENCHILADAS

FAJITAS

Restaurant Category

MEXICAN

MEDITERRANEAN

DESSERT

VEGETARIAN

Salsa Menu



VEGAN

These Types Of Dishes Are Being Served

BURGER

NOODLES

DESSERTS

MUSSELS

PASTA

SALAD

SPAGHETTI

FISH

BREAD

LAMB

TUNA STEAK

CHICKEN

LAMB CHOPS

Ingredients Used

PORK MEAT

CHILI

UNAGI

BEEF

YELLOWTAIL

BUTTER

CHORIZO

GARLIC

PESTO

SEAFOOD

TUNA

SALMON

POTATOES

PRAWNS

HAM

KING PRAWNS

Salsa

34 London Road, Southend-on-Sea, United Kingdom

Opening Hours:

Sunday 12:00-21:30

Monday 12:00-22:00

Tuesday 12:00-22:00

Wednesday 12:00-22:00

Thursday 12:00-22:00

Friday 12:00-23:00

Saturday 12:00-23:00

Made with [Menu](#)

