

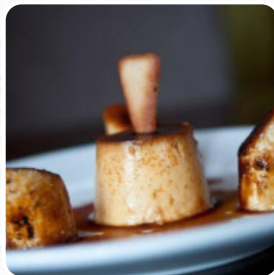
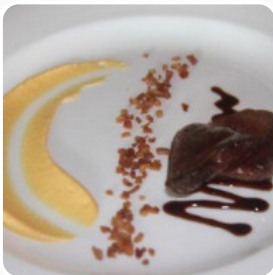


The Wheatsheaf At Titchmarsh Menu

<https://menuweb.menu>

United Kingdom, Kettering

+441832732203 - <http://www.thewheatsheafattitchmarsh.co.uk/>



The menu of The Wheatsheaf At Titchmarsh from Kettering contains about **39** different menus and drinks. On average you pay about £8 for a dish / drink. The Wheatsheaf at Titchmarsh, under the control of Trident Pub Co., is a modern village pub that proudly serves fresh local produce, craft drinks, fine wines, and real ales with a friendly atmosphere and lively conversation. Offering open fires, comfortable seating areas, and an eclectic mix of furniture, guests can choose to dine in the bar, snug, sofas, or anywhere they prefer. This pub provides an ideal setting for socializing, dining, and relaxing, catering to diverse groups including dogs, children, ramblers, and large parties. With an outdoor space featuring a small lawn, patio, and a 20-space car park, The Wheatsheaf is equipped to accommodate all visitors.

The Wheatsheaf At Titchmarsh Menu



Salads

MIXED LEAF SALAD £2

Entrées

GARLIC BREAD £2

Vegetarian

CAULIFLOWER

Side Dishes

ONION RINGS £3

Fish

SEA BASS £15

Meat

CRISPY DUCK LEG CONFIT £5

Steaks

8OZ RUMP STEAK £17

Chicken & Chips

CHEESY CHIPS £3

Hot Drinks

COFFEE

Focaccia And Wraps

GRILLED PORTABELLA MUSHROOMS £5

Beverages, Chips, Cookies

CHIPS £2

Sandwiches

BEER BATTERED HADDOCK £14

ADD CHEESE £3

Drinks

BEER

DRINKS

Sauces

GRAVY

PEPPER SAUCE £2

Dessert

CHEESE CAKE

COOKIES

Restaurant Category

VEGETARIAN

GLUTEN FREE

Ingredients Used

BEEF

CHEESE

These Types Of Dishes Are Being Served

ROAST BEEF

FISH

CHICKEN

The Wheatsheaf At Titchmarsh Menu



Starters

WHOLE, SHELL ON CREVETTES	£8
LAYERED PORK TERRINE	
CHERRY TOMATO ROQUEFORT FILO TARTELETTE	£6
SMOKED HADDOCK LEEK FISHCAKES	£6
CREAMED BROCCOLI STILTON SOUP	£5
SMOKED PAPRIKA SCOTCH EGG	£6

Mains

LAMB NOISETTE	£16
BLADE OF BEEF	£13
THE WHEATSHEAF SPECIAL	£23
THAI GREEN VEGETABLE CURRY	£11
ROASTED CORN FED CHICKEN BREAST	£14
VENISON BOURGUIGNON SHORTCRUST PASTRY PIE	£14
ROASTED LEEK CARAMELISED ONION GNOCCHI GRATIN	£11

The Wheatsheaf At Titchmarsh

United Kingdom, Kettering

Opening Hours:
Sunday 12:00-19:00
Wednesday 12:00-23:00
Thursday 12:00-23:00
Friday 12:00-23:00
Saturday 12:00-23:00

Made with [Menu](#)

