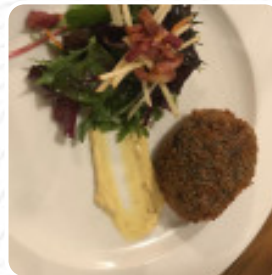




Higher Buck Menu

<https://menuweb.menu>

The Square, Waddington BB7 3HZ, Clitheroe, United Kingdom
+441200423226 - <http://www.higherbuck.com>



On this homepage, you will find the **complete [menu](https://menuweb.menu) of Higher Buck** from Clitheroe. Currently, there are **38** dishes and drinks available. The Higher Buck pub offers a top-notch dining experience, with excellent food and friendly service. Dishes like haddock with crimped crust and wild garlic and mushroom chicken are standout favorites, while options like cheese soufflé, pork belly, and apple tart tatin impress diners. The pub is dog-friendly and has a welcoming atmosphere, making it a great spot for both casual meals and special occasions. Visitors praise the attentive staff, varied menu, and comfortable surroundings. Whether you're stopping in for lunch or organizing a group meal, the Higher Buck is definitely worth a visit for delicious food and a memorable dining experience.

Higher Buck Menu



Vegetarian

PARMESAN ASPARAGUS

Seafood

PRAWN

Pork

PORK BELLY

Starters & Salads

POTATO CHIPS

Chicken

ROAST CHICKEN

Steaks

RIBEYE STEAK

Indian

CHICKEN CURRY

Schwarze Tees

EARL GREY

Coffee

CAPPUCCINO

Fish Dishes

FISH & CHIPS

FISH AND CHIPS

Drinks

DRINKS

BEER

Dessert

CHEESECAKE

PANNA COTTA

Restaurant Category

BAR

DESSERT

These Types Of Dishes Are Being Served

DESSERTS

LAMB

BREAD

SALAD

BURGER

FISH

ROAST BEEF

CHICKEN

TUNA STEAK

Ingredients Used

CHOCOLATE

CHEESE

SCALLOPS

KING PRAWN

DUCK

HADDOCK

GARLIC

BEEF

PRAWNS

BUTTER

Higher Buck Menu



PORK MEAT

SALMON

Higher Buck

The Square, Waddington BB7
3HZ, Clitheroe, United Kingdom

Opening Hours:

Monday 12:00-22:00
Tuesday 12:00-22:00
Wednesday 12:00-14:00
Thursday 12:00-21:00
Friday 12:00-22:00
Saturday 12:00-00:00
Sunday 12:00-20:30

Made with [Menu](#)

