

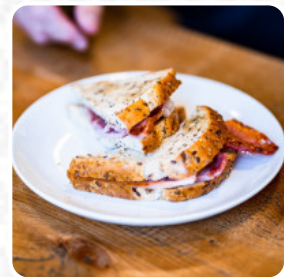
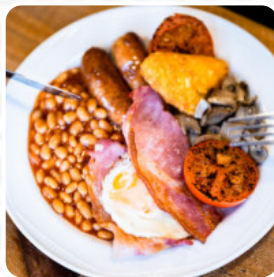


Pilgrims' Kitchen Menu

<https://menuweb.menu>

Cathedral, St Edmundsbury, United Kingdom

+441284748738, +441284748720 - <https://stedscathedral.org/visit/pilgrims-kitchen/>



On this website, you will find the **complete [menu](#) of Pilgrims' Kitchen** from St Edmundsbury. Currently, there are **35** dishes and drinks available. The Pilgrim's Kitchen in Bury St Edmunds offers a mixed dining experience. While some customers found the service rushed and coffee bitter, others enjoyed delicious food and excellent service. The café offers a pet-friendly environment and a variety of tasty dishes, with some recommending sticking to the cakes and coffees. The location is praised for being close to the cathedral and park, making it a great spot for families. Overall, it seems to be a hit or miss depending on individual experiences, but worth a visit for some tasty treats and friendly service.

Pilgrims' Kitchen Menu



Salads

COLESLAW

Desserts

CHOCOLATE CAKE

Non Alcoholic Drinks

WATER

Sandwiches

EGG SANDWICH

Drinks

DRINKS

Rice

RISOTTO

Dessert

BROWNIES

Indian

SOFT DRINKS

American Food

EGGS BENEDICT

Hot Pies

SAUSAGE ROLL

Coffee

ESPRESSO

Sides

BRIE

Hot Drinks

COFFEE

TEA

Restaurant Category

DESSERT

VEGETARIAN

These Types Of Dishes Are Being Served

FISH

SALAD

BREAD

SOUP

PANINI

LAMB

MEAT

Ingredients Used

FRUIT

BUTTER

CHOCOLATE

BACON

CRANBERRY

BANANA

VEGETABLES

POTATOES

TUNA

EGG

Pilgrims' Kitchen Menu



CHEESE

SAUSAGE

Pilgrims' Kitchen

Cathedral, St Edmundsbury,
United Kingdom

Opening Hours:

Sunday 10:00-15:00
Monday 09:00-17:00
Tuesday 09:00-17:00
Wednesday 09:00-17:00
Thursday 09:00-11:30
Friday 09:00-16:00
Saturday 09:00-17:00

Made with [Menu](#)

