

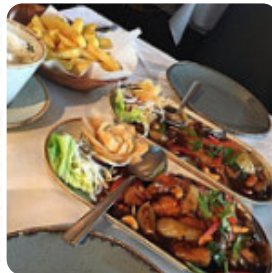


## Orangegrass Thai Oriental Cuisine Menu

<https://menuweb.menu>

7 Mount Terrace, South Shields I-NE33 1PY, United Kingdom

(+44)1914558555



Here you will find the [menu](#) of **Orangegrass Thai Oriental Cuisine** in South Shields. At the moment, there are **32** menus and drinks on the menu. Nestled in South Shields, this restaurant has garnered acclaim for its diverse and delightful menu, particularly its acclaimed Thai curries. Diners rave about the impressive Sunday buffet, featuring an array of dishes from spicy salads to crispy chicken and delectable desserts. The attentive staff consistently provide top-notch service, enhancing the dining experience with their warmth and professionalism. With a clean and comfortable atmosphere, ample parking, and excellent value for money, this eatery promises a memorable meal for both first-timers and returning guests. It's no wonder patrons repeatedly express their eagerness to return for more culinary adventures.

# Orangegrass Thai Oriental Cuisine Menu



## Desserts

CHOCOLATE CAKE

## Side Dishes

STEAMED RICE

## Drinks

DRINKS

## Starters & Salads

POTATO CHIPS

## Sauces

DIPS

## Appetizer

TEMPURA

## Dessert

RED VELVET CAKE

## Indian

CHICKEN CURRY

## Asiatische Gerichte - Huhn

THAI CURRY

## Fresh Juices

CARROT JUICE

## Chicken Wings

WINGS

## Thai Dishes

PAD THAI

## Fried Rice

FRIED RICE

## Entrées

NUGGETS

SPRING ROLLS

## Thai

RED CURRY

GREEN CURRY

## Chicken

CHICKEN NUGGETS

CHICKEN WINGS

CRISPY CHICKEN

## These Types Of Dishes Are Being Served

MEAT

SALAD

CHICKEN

LAMB

TOSTADAS

## Ingredients Used

PRAWNS

DUCK

BEEF

VEGETABLES

CHILI

# Orangegrass Thai Oriental Cuisine Me



CHOCOLATE

FRUIT

## Orangegrass Thai Oriental Cuisine

7 Mount Terrace, South Shields I-  
NE33 1PY, United Kingdom

### Opening Hours:

Monday 17:00 -23:00  
Tuesday 17:00 -23:00  
Wednesday 17:00 -23:00  
Thursday 17:00 -23:00  
Friday 17:00 -23:00  
Saturday 17:00 -23:00  
Sunday 17:00 -23:00

Made with [Menu](#)

