

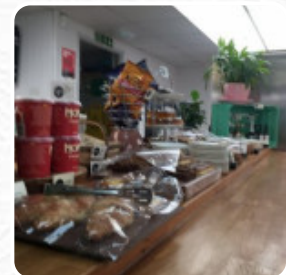
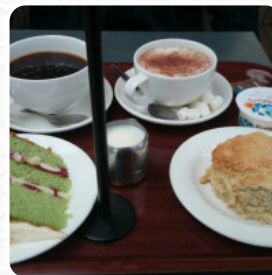
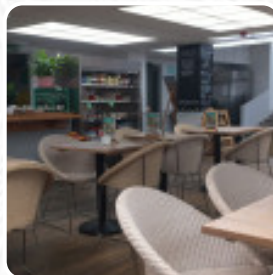


## Wyevale Menu

<https://menuweb.menu>

Nut Lane, Cornwall, Isles of Scilly, United Kingdom

+448442885030



Here you will find the [menu](#) of **Wyevale** in Cornwall, Isles of Scilly. At the moment, there are **32** meals and drinks on the menu. Nestled within a vibrant garden centre, this restaurant offers a delightful culinary experience that often compels visitors to stay for lunch. Guests praise the warm and friendly staff, enjoying freshly prepared meals, from delicious breakfasts to sumptuous afternoon teas. The cleanliness and inviting atmosphere enhance the overall experience, though some have encountered inconsistencies with service and dietary accommodations. While the cafe delights with cakes and coffees, the occasional hiccup in food delivery persists. Despite minor setbacks, diners appreciate the garden centre's charm and plan repeat visits, drawn back by the quality of food and the welcoming ambiance.

# Wyevale Menu



## Non Alcoholic Drinks

WATER

## Soups

TOMATO BASIL SOUP

## Pasta

MACARONI CHEESE

## Side Dishes

MAC CHEESE

## Fish Dishes

FISH AND CHIPS

## Breakfast

TWO EGGS

## Drinks

DRINKS

## Schwarze Tees

EARL GREY

## Bread

GARLIC BREAD

## Tea

GREEN TEA

## Sauces

MAYO

MAYONNAISE

## Hot Drinks

TEA

COFFEE

## Restaurant Category

GLUTEN FREE

DESSERT

## These Types Of Dishes Are Being Served

ICE CREAM

BREAD

FISH

TOSTADAS

SOUP

PANINI

SALAD

## Ingredients Used

TOMATO

SAUSAGE

HAM

EGG

PEAS

GINGER

CHEESE

GARLIC

TUNA

# Wyevale Menu



---

## Wyevale

Nut Lane, Cornwall, Isles of Scilly,  
United Kingdom

**Opening Hours:**

Made with [Menu](#)

