

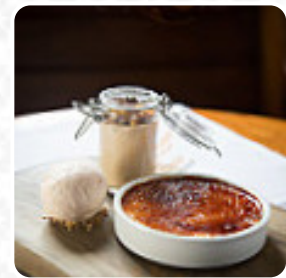
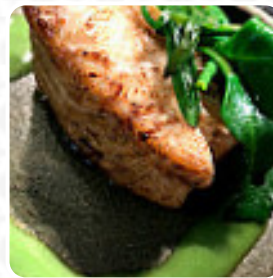


## Pony & Trap Menu

<https://menuweb.menu>

Knowle Hill, New Town, Chew Magna BS40 8TQ, Bristol, United Kingdom

+441275332627 - <http://www.theponyandtrap.co.uk>



A complete [menu](#) of Pony & Trap from Bristol covering all 25 courses and drinks can be found here on the food list. The Pony and Trap, located just outside Bristol in Chew Magna, is a fantastic country pub that has garnered a strong reputation and a Michelin Star. Chef Josh Eggleton's connection to the local farming community shines through in his stunning dishes that use locally sourced ingredients. The menu offers a variety of interesting options that are both delicious and creatively presented. The atmosphere is cosy and welcoming, perfect for a relaxing meal with friends or family. The service is attentive and friendly, adding to the overall delightful dining experience. With reasonable prices and a great selection of food and drink, The Pony and Trap is highly recommended for anyone looking to enjoy a memorable meal in a charming countryside setting.

# Pony & Trap Menu



## Entrées

STEAK TARTAR

## Drinks

BEER

## Rice

RISOTTO

## Starters & Salads

POTATO CHIPS

## Dessert

CHEESECAKE

## Restaurant Category

FRENCH

## These Types Of Dishes Are Being Served

ROAST BEEF



MEAT

TUNA STEAK

SOUP

LAMB

SALAD

FISH

BURGER

MUSSELS

## Ingredients Used



DUCK

MUSTARD

PORK MEAT

SHRIMP

CHEDDAR

BEEF

EGG

SCALLOPS

HAM

SALMON

# Pony & Trap

Knowle Hill, New Town, Chew  
Magna BS40 8TQ, Bristol, United  
Kingdom

### Opening Hours:

Monday 12:00-21:30  
Tuesday 12:00-21:30  
Wednesday 12:00-21:30  
Thursday 12:00-21:30  
Friday 12:00-21:30  
Saturday 12:00-21:30  
Sunday 12:00-21:30

Made with [menuweb.menu](https://menuweb.menu)

