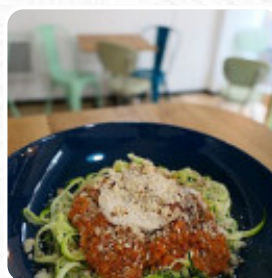
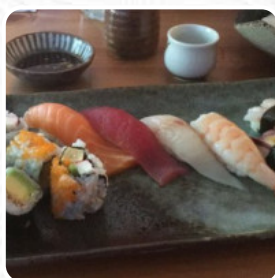


Soyokaze Japanese Menu

<https://menuweb.menu>

14 St Giles Street, NR2 1, United Kingdom, Norwich

+441603616720 - <https://soyokaze.co.uk>



A **comprehensive [menu](https://menuweb.menu) of Soyokaze Japanese** from Norwich featuring all **23** dishes and drinks can be found here on the menu. Soyokaze, a charming gem in Norfolk, offers an authentic taste of Japanese cuisine, renowned for its exquisite [sushi](#) and flavorful ramen. Diners praise the delicious food and warm, attentive service, making it a top choice for both locals and visitors. However, recent experiences reveal some hiccups, including long waits for sashimi and surprising shortages, like running out of rice on a busy Saturday night. While the culinary offerings remain high-quality and enjoyable, the service consistency could improve. Overall, Soyokaze promises delightful dishes worth revisiting, especially for those seeking fresh and vibrant Japanese flavors.

Soyokaze Japanese Menu



Sushi Rolls

SUSHI

Sushi

SASHIMI

Starters & Salads

POTATO CHIPS

Appetizer

TEMPURA

Asiatische Getränke

ASAHI

Noodle

RAMEN

Main Dishes - Bento Menu

TONKATSU

Drinks

BEER

DRINKS

Japanese Specialties

MISO SOUP

CHICKEN TERIYAKI

Restaurant Category

DESSERT

BAR

These Types Of Dishes Are Being Served

CHICKEN

FISH

SOUP

APPETIZER

Ingredients Used

GINGER

GARLIC

PORK MEAT

MISO

CHICKEN TERIYAKI

SEAFOOD

Soyokaze Japanese Menu



Soyokaze Japanese

14 St Giles Street, NR2 1, United Kingdom, Norwich

Opening Hours:

Monday 17:30-21:30

Tuesday 17:30-21:30 12:00-14:30

Wednesday 17:30-21:30 12:00-14:30

Thursday 17:30-21:30 12:00-14:30

Friday 17:30-21:30 12:00-14:30

Saturday 17:30-21:30 12:00-14:30

Made with [Menu](#)

