

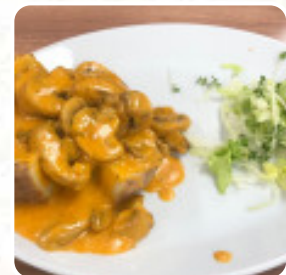
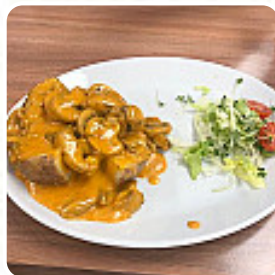


The Port Cafe Deli Menu

<https://menuweb.menu>

8-12 High Street, Gwynedd, United Kingdom

+441766513760 - <https://www.facebook.com/profile.php?id=100063590050244>



On this site, you can find the **complete [menu](#) of The Port Cafe Deli** from Gwynedd. Currently, there are **22** menus and drinks available. Nestled in the heart of Porthmadog, the Port Cafe is a bustling eatery that has garnered a loyal following for its generous portions, quality ingredients, and friendly service. Customers rave about the delicious breakfast options and hearty lunches, with many highlighting the excellent Sunday roasts.

The café prides itself on being dog-friendly, allowing patrons to dine comfortably alongside their furry companions. While some diners noted minor issues, such as variable food quality and the café's chilly atmosphere during winter, the attentive staff and clean facilities have created a welcoming environment. Overall, Port Cafe is highly recommended for its charm and value.

The Port Cafe Deli Menu



Main Courses

LASAGNA

Vegetarian

CAULIFLOWER

Drinks

DRINKS

Sauces

GRAVY

Hot Drinks

COFFEE

Bread

BAGUETTE

Hot Drink

HOT CHOCOLATE

Ingredients Used

BUTTER

CRANBERRY

CHEESE

CHOCOLATE

SAUSAGE

MILK

BEEF

These Types Of Dishes Are Being Served



TOSTADAS

TURKEY

BURGER

MEAT

SALAD

TUNA STEAK

ROAST BEEF

SOUP

The Port Cafe Deli

8-12 High Street, Gwynedd,
United Kingdom

Opening Hours:

Sunday 07:00-17:00

Monday 07:00-17:00

Tuesday 07:00-17:00

Wednesday 07:00-17:00

Thursday 07:00-17:00

Friday 07:00-17:00

Saturday 07:00-17:00

Made with menuweb.menu

