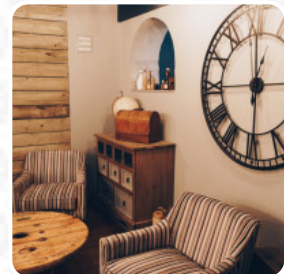
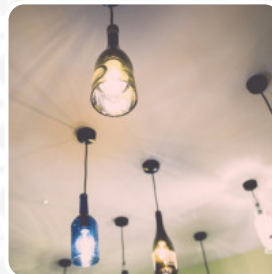




The Duck At Burtle Menu

<https://menuweb.menu>

Station Road, Sedgemoor, United Kingdom
+441278238282 - <http://theduckatburtle.co.uk>



Here you can find the [menu](#) of **The Duck At Burtle** in Sedgemoor. At the moment, there are **22** courses and drinks on the menu. The Duck at Burtle, formerly known as The Tom Mogg Inn since 1856, has recently undergone a renovation, bringing back the charm of this famous and popular venue. We offer a wide range of locally sourced food, including options for [vegetarian](#) diners. Our Pub and Snug Rooms are dog-friendly, making us the perfect spot to enjoy in the heart of the Somerset levels.

The Duck At Burtle Menu



Fish Dishes

FISH & CHIPS

Drinks

DRINKS

Schnitzel

SCHNITZEL

Digestivi - Digestifs

LIMONCELLO

Dessert

CHEESECAKE

STICKY TOFFEE PUDDING

Restaurant Category



BAR

VEGAN

DESSERT

Ingredients Used

POTATOES

OLIVES

PORK MEAT

DUCK

BEEF

SALMON

These Types Of Dishes Are Being Served

SALAD

BURGER

ICE CREAM

ROAST BEEF

BREAD

LAMB

FISH

The Duck At Burtle

Station Road, Sedgemoor, United Kingdom

Opening Hours:

Sunday 12:00-23:00

Monday 12:00-23:00

Tuesday 12:00-23:00

Wednesday 12:00-23:00

Thursday 12:00-23:00

Friday 12:00-23:00

Saturday 12:00-23:00

Made with menuweb.menu

