

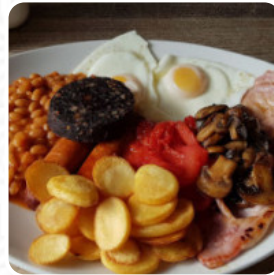


Midland Menu

<https://menuweb.menu>

115 Clydach Road, Swansea, United Kingdom

+441792781550 - <https://www.bigreddirectory.com/midland-hotel-morrison-swanea>



A **comprehensive menu** of Midland from Swansea covering all 21 meals and drinks can be found here on the card. Nestled in a charming locale, this restaurant impresses with its welcoming atmosphere, exceptional service, and delectable cuisine. Diners rave about the generous portions and reasonably priced meals, particularly the scrumptious Sunday roast and hearty breakfast specials, which offer incredible value. While the decor might evoke a traditional pub vibe, the food exceeds expectations, featuring homemade desserts and real chips that outshine typical chains. Friendly staff ensure a pleasant experience, making this spot a favorite among locals and visitors alike. With a cozy atmosphere and quality fare, it's a must-visit for anyone seeking a memorable dining experience.

Midland Menu



Toast

TOAST

Starters & Salads

POTATO CHIPS

Steaks

RIBEYE STEAK

From The Grill

RIBS

Restaurant Category

BAR

Drinks

DRINKS

BEER

Hot Drinks

COFFEE

TEA

These Types Of Dishes Are Being Served

DESSERTS

TOSTADAS

TURKEY

MEAT

ROAST BEEF

Ingredients Used

VEGETABLES

SAUSAGE

EGG

BEANS

BEEF

PORK MEAT

BACON

Midland

115 Clydach Road, Swansea,
United Kingdom

Opening Hours:

Monday 09:00-23:30
Tuesday 09:00-23:30
Wednesday 09:00-23:30
Thursday 09:00-23:30
Friday 09:00-23:30
Saturday 09:00-23:30
Sunday 09:00-23:30

Made with menuweb.menu

 gallery image

