

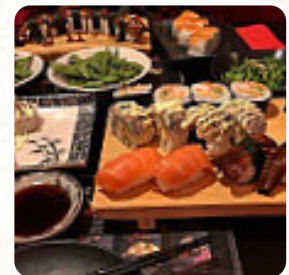
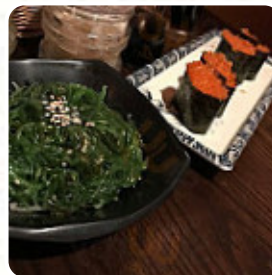
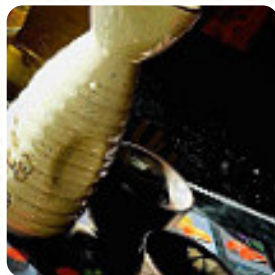
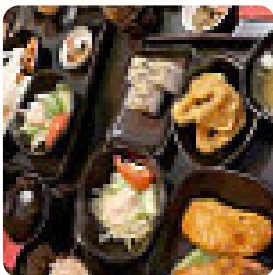


Sakura Menu

<https://menuweb.menu>

United Kingdom, Portsmouth

+442392751103,+442392756277 - <http://www.sakuraportsmouth.co.uk>



Here you can find the [menu](#) of **Sakura** in Portsmouth. At the moment, there are **20** dishes and drinks on the food list. Sakura opened its doors in 2009 as Portsmouth's inaugural Japanese restaurant. Since then, we have dedicated ourselves to providing an authentic taste of Japanese cuisine, coupled with welcoming service and a passion for what we do. Our restaurant in the Southsea area continues to serve up a diverse selection of delicious dishes, with quick and dependable service. We are committed to upholding our high standards while continuously improving to meet the needs of our valued customers.

Sakura Menu



Sushi Rolls

SUSHI

Gnocchi

GNOCCHI

Sandwiches

CALIFORNIA SANDWICH

Sushi

SASHIMI

Appetizer

TEMPURA

Indian

CHICKEN CURRY

Noodle

RAMEN

Special Noodles

UDON

Asian

GYOZA

Sides

DIPPING SAUCE

These Types Of Dishes Are Being Served



FISH

SALAD

SOUP

Ingredients Used

BEEF

PORK MEAT

TUNA

SALMON

PRAWNS

SHRIMPS

GINGER

Sakura

United Kingdom, Portsmouth

Opening Hours:

Monday 12:00-14:00 17:30-22:30

Tuesday 12:00-14:00 17:30-22:30

Wednesday 12:00-14:00 17:30-22:30

Thursday 12:00-14:00 17:30-22:30

Friday 12:00-17:30 17:30-22:30

Saturday 12:00-17:30 17:30-22:30

Sunday 12:00-17:30 17:30-22:30

Made with [menuweb.menu](https://www.menuweb.menu)

