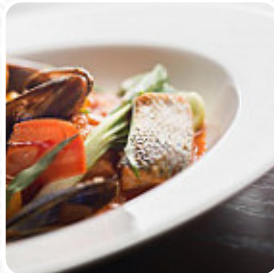




## Alderley Menu

<https://menuweb.menu>

The Alderley Edge Hotel, Cheshire East, United Kingdom  
+441625583033 - <http://www.alderleyedgehotel.com/>



On this webpage, you can find the **complete menu** of Alderley from Cheshire East. Currently, there are **19** meals and drinks available. The Alderley is a charming split-level conservatory nestled on wooded slopes with panoramic views of the picturesque Cheshire countryside. The warm and inviting ambiance of the sandstone country house extends to this dining spot, with friendly front-of-house staff ensuring a comfortable experience. The menu features exceptionally good, locally sourced dishes, such as rump of Cheshire lamb served with slow-cooked tomatoes, baby roasted potatoes, and garden mint for £23.15. Indulge in desserts like the 'Treacletown' pudding with butterscotch ice cream and toffee sauce for £6.50. For a satisfying lunch, try the seared liver and bacon with herb mash and redcurrant jus from the table d'hote menu for £13.95. Meals can be adjusted to suit your preferences.

# Alderley Menu



## Non Alcoholic Drinks

TONIC

## Drinks

DRINKS

## Sauces

MAYONNAISE

## Dessert

BROWNIES

## Hot Drinks

COFFEE

TEA

## Salads

HALLOUMI SALAD

CHICKEN CAESAR

CHICKEN CAESAR SALAD

CAESAR SALAD

## These Types Of Dishes Are Being Served

FISH

CHICKEN

TUNA STEAK

SALAD

## Ingredients Used

CHOCOLATE

EGG

TUNA

HAM

CUCUMBER

---

## Alderley

The Alderley Edge Hotel,  
Cheshire East, United Kingdom

### Opening Hours:

Sunday 12:00-14:00 19:00-21:00

Monday 12:00-14:00 19:00-21:00

Tuesday 12:00-16:00

Wednesday 12:00-14:00 19:00-21:00

Thursday 12:00-14:00 19:00-21:00

Friday 12:00-14:00 19:00-21:00

Saturday 12:00-14:00 19:00-21:00

Made with [menuweb.menu](https://menuweb.menu)

