

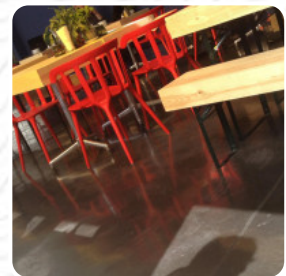


The Garden By Leaf Menu

<https://menuweb.menu>

United Kingdom, Liverpool

+441517074444,+441517077747 - <http://www.fact.co.uk/visit/food-drink/the-garden.aspx>



On this homepage, you can find the **complete [menu](#) of The Garden By Leaf** from Liverpool. Currently, there are **20** dishes and drinks available. Nestled within Liverpool's vibrant FACT gallery, The Garden serves as a unique culinary retreat for art enthusiasts and casual diners alike. Patrons rave about the charming ambiance, friendly staff, and a diverse menu featuring fresh salads, hearty sandwiches, and delightful beverages. While some have noted occasional inconsistencies with food quality and vegan options, the overall experience remains positive. The café's lively atmosphere, coupled with its art installations, creates a refreshing escape for social gatherings or pre-movie meet-ups. With attentive service and a cozy environment, The Garden at FACT is certainly worth a visit.

The Garden By Leaf Menu



Main Courses

NACHOS

Drinks

DRINKS

Sides

BRIE

Sauces

GUACAMOLE

SALSA

Hot Drinks

COFFEE

TEA

Restaurant Category

BAR

VEGAN

VEGETARIAN

Ingredients Used

ALMOND MILK

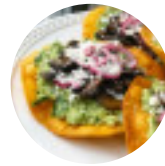
MILK

MUSHROOMS

AVOCADO

BACON

These Types Of Dishes Are Being Served



TOSTADAS

MEAT

PANINI

BREAD

SALAD

The Garden By Leaf

United Kingdom, Liverpool

Opening Hours:

 gallery image

Made with menuweb.menu