

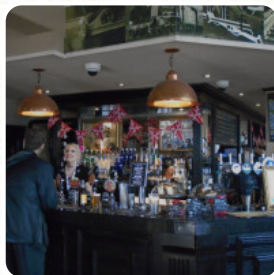


The Wagon Works Menu

<https://menuweb.menu>

Southampton Road, Eastleigh, United Kingdom

+442380622670 - <https://www.jdwetherspoon.com/pubs/all-pubs/england/hampshire/the-wagon-works-eastleigh>



On this site, you can find the **complete [menu](#) of The Wagon Works** from Eastleigh. Currently, there are **18** courses and drinks up for grabs. The pub opened on 3rd April 2009 as a JD Wetherspoons establishment. Its name reflects Eastleigh's strong connection to England's railways. The town became a railway hub in 1891 with the opening of the London South Western Railway's carriage and wagon works next to the station. The Eastleigh Works, which opened in 1910, constructed iconic locomotives like the King Arthur 4-6-0 classes. Today, this historic pub, formerly known as The Home Tavern, stands as the welcoming face of Eastleigh for over 160 years.

The Wagon Works Menu



Salads

SIDE SALAD

Breakfast

BIG BREAKFAST

From The Grill

MIXED GRILL

Hot Drinks

COFFEE

Restaurant Category

VEGAN

Mixed Specialties

KEBAB

Burger

CLASSIC BURGER

BEYOND BURGER

Drinks

DRINKS

BEER

Mexican Dishes

BURRITO

BREAKFAST BURRITO

Ingredients Used

BACON

BISCUIT

CHEESE

These Types Of Dishes Are Being Served

BURGER

PIZZA

SALAD

The Wagon Works

Southampton Road, Eastleigh,
United Kingdom

Opening Hours:

Thursday 07:00-00:00

Friday 07:00-00:00

Saturday 07:00-00:00

Sunday 07:00-00:00

Monday 07:00-00:00

Tuesday 07:00-00:00

Wednesday 07:00-00:00

Made with menuweb.menu

