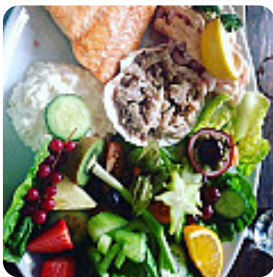




The Wellington Inn Menu

<https://menuweb.menu>

Fore St, Ipplepen, Newton Abbot, United Kingdom
+441803814342 - <http://the-wellington-ipplepen.pub/>



On this website, you can find the **complete menu** of **The Wellington Inn** from Newton Abbot. Currently, there are **16** menus and drinks up for grabs. The Wellington in Ipplepen offers a cozy old-world pub atmosphere, complete with accommodating staff and delicious food. Diners rave about the hot smoked salmon, half a duck, and steak night options, as well as the generous portions and friendly service. The pub's rural location provides a warm, inviting atmosphere with log burner heating. Customers appreciate the great value for money, tasty meals, and warm ambiance. Whether you're visiting for lunch, dinner, or Sunday carvery, The Wellington promises a top-notch dining experience that will leave you coming back for more.

The Wellington Inn Menu



Salads

COLESLAW

Drinks

DRINKS

Sauces

GRAVY

Fish

SMOKED SALMON

Wine

BOTTLE OF WINE

These Types Of Dishes Are Being Served

SALAD

MEAT

DESSERTS

TURKEY

Ingredients Used

PRAWNS

HAM

FRUIT

CHORIZO

VEGETABLES

DUCK

POTATOES

The Wellington Inn

Fore St, Ipplepen, Newton Abbot,
United Kingdom

Opening Hours:
Sunday 12:00-14:00

Made with menuweb.menu

