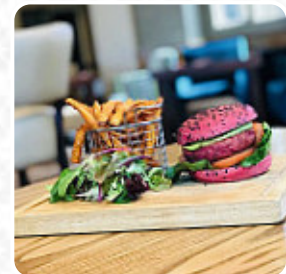
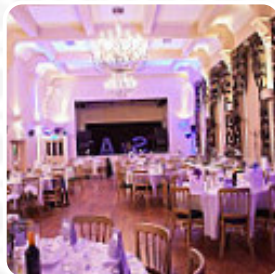




## The New Inn Menu

<https://menuweb.menu>

59 Station Approach, BROMLEY, United Kingdom  
(+44)2084622865 - <http://www.reganshayes.com>



On this site, you can find the **complete [menu](#) of The New Inn** from BROMLEY. Currently, there are **19** meals and drinks available. The New Inn boasts a vibrant bar and restaurant, along with beautiful function rooms in the heart of Hayes, Kent. We are dedicated to providing exceptional service and a warm welcome to all guests. Our restaurant is open daily, offering freshly prepared dishes from 12pm to 10pm. We pride ourselves on our diverse menu options, including a comprehensive Vegan selection. Sundays feature our beloved Traditional home cooked Sunday Roast. Reservations are recommended to ensure availability. We invite guests to celebrate special occasions with options ranging from nibbles at the bar to a Bottomless Prosecco Brunch, or even a private party in our elegant function rooms upstairs, providing a more intimate setting. Our dedicated staff are available for assistance and guarantee a seamless experience. Our versatile function rooms cater to a variety of events such as birthday parties, baby showers, wakes, weddings, networking events, charity balls, and more.

# The New Inn Menu



## Salads

SALAD

## Alcoholic Drinks

PROSECCO

## Fish Dishes

FISH CAKE

## Side Dishes

NAN

## Drinks

DRINKS

## Starters & Salads

POTATO CHIPS

## Soft Drinks

COKE

## Hot Drinks

COFFEE

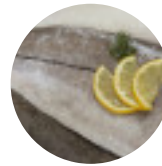
## Bread

GARLIC BREAD

## Restaurant Category

BAR

## Ingredients Used



HADDOCK

GARLIC

BEEF

## These Types Of Dishes Are Being Served

FISH

MEAT

BREAD

BURGER

LAMB

SALAD

---

## The New Inn

59 Station Approach, BROMLEY,  
United Kingdom

### Opening Hours:

Monday 11:00 -23:00

Tuesday 11:00 -23:00

Wednesday 11:00 -23:00

Thursday 11:00 -23:00

Friday 11:00 -00:00

Saturday 11:00 -00:00

Sunday 12:00 -23:00

Made with [menuweb.menu](https://menuweb.menu)

