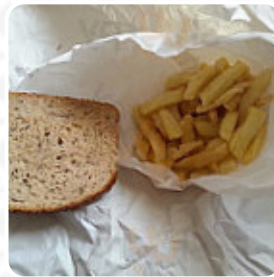




Crispin's Fish Menu

<https://menuweb.menu>
United Kingdom, Swale
+441795521212 - <https://crispinsteynham.co.uk/>



A complete [menu](#) of Crispin's Fish from Swale covering all 16 menus and drinks can be found here on the menu.

Crispin's Fish Menu



Non Alcoholic Drinks

WATER

Side Dishes

POTATO CHIPS

Starters & Salads

POTATO CHIPS

Mexican-American Food

EMPANADAS

Restaurant Category

VEGETARIAN

Fish Dishes

FISH AND CHIPS

FISH & CHIPS

Hot Drinks

COFFEE

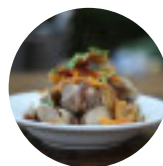
TEA

These Types Of Dishes Are Being Served

FISH

TUNA STEAK

Ingredients Used



SEAFOOD

CHOCOLATE

HADDOCK

PEAS

SAUSAGE

Crispin's Fish

United Kingdom, Swale

Opening Hours:

Monday 11:30-20:00
Tuesday 11:30-20:00
Wednesday 09:00-20:30
Thursday 09:00-20:30
Friday 09:00-20:30
Saturday 09:00-20:30

Made with menuweb.menu

