

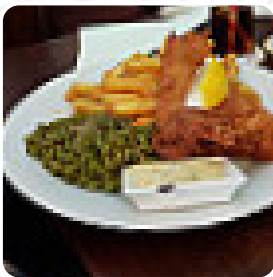


The Lamb Menu

<https://menuweb.menu>

12 Wistaston Road, Cheshire East, United Kingdom

+441270381730,+441270432332



Here you can find the [menu of The Lamb](#) in Cheshire East. At the moment, there are **17** dishes and drinks on the food list. The Lamb has re-emerged as a beloved local pub, offering an inviting atmosphere, friendly service, and an enticing mix of Mediterranean-inspired dishes. Diners rave about the flavorful menu, including standout options like Dalmatian-style goulash and fresh sea bream, all at reasonable prices. The dog-friendly space adds to its charm, ensuring a welcoming experience for everyone. With attentive staff and cleanliness noted by patrons, The Lamb promises a delightful dining experience, whether for a casual meal or an enjoyable evening of entertainment. This hidden gem in Nantwich is certainly worth a visit for food lovers and pub-goers alike.

The Lamb Menu



Side Dishes

ROASTED POTATOES

Wine

BOTTLE OF WINE

Hot Drinks

COFFEE

Italian Specialties

FOCACCIA

Drinks

DRINKS

BEER

Restaurant Category

MEDITERRANEAN

DESSERT

BAR

Ingredients Used

VEGETABLES

POTATOES

TOMATOES

OLIVES

These Types Of Dishes Are Being Served

BREAD

DESSERTS

MEAT

LAMB

The Lamb

12 Wistaston Road, Cheshire
East, United Kingdom

Opening Hours:

Made with menuweb.menu

