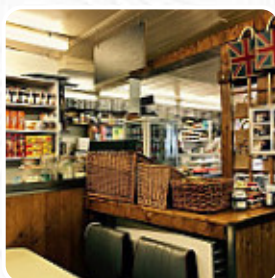




Paul Rothe Son Menu

<https://menuweb.menu>

35 Marylebone Lane, City of London, Westminster, United Kingdom
+442079356783 - <http://paulrotheandsondelicatessen.co.uk/>



Here you can find the [menu](#) of **Paul Rothe Son** in City of London, Westminster. At the moment, there are **17** courses and drinks on the card. London's Nordic Bakery offers a delightful experience to enjoy coffee, sandwiches, and pastries in a cozy atmosphere. Traditional English dishes and old-fashioned sandwiches are served with quality service, making it a popular spot for breakfast or lunch. Established in Marylebone over 100 years ago, this restaurant's charming square is a must-visit for a delicious meal away from the tourist crowds. With a broad selection of made-to-order sandwiches, generous portions, and friendly staff, the Nordic Bakery exudes an old-world charm that transports diners to simpler times. A hidden gem that is definitely worth a visit for a taste of classic London cuisine.

Paul Rothe Son Menu



Toast

TOAST

Drinks

DRINKS

Sauces

MAYO

Fish

SMOKED SALMON

Dessert

COOKIES

Bread

BAGUETTE

Italian Specialties

ARANCINI

Hot Drinks

COFFEE

TEA

Ingredients Used

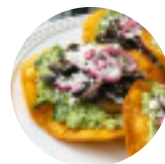
CHEESE

BEEF

PICKLE

BEANS

These Types Of Dishes Are Being Served



TOSTADAS

PANINI

SALAD

SANDWICH

Paul Rothe Son

35 Marylebone Lane, City of
London, Westminster, United
Kingdom

Opening Hours:

Monday 08:00-18:00
Tuesday 08:00-18:00
Wednesday 08:00-18:00
Thursday 08:00-18:00
Friday 08:00-18:00
Saturday 11:30-17:30

Made with menuweb.menu

