

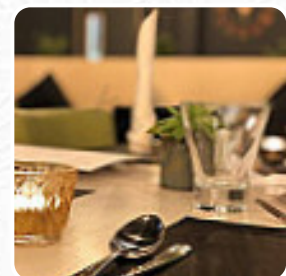
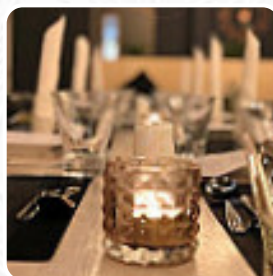
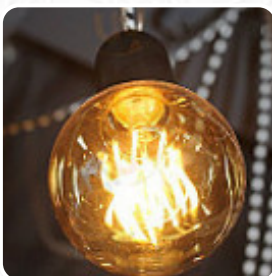


Bistro At B63 (halesowen College Training Menu

<https://menuweb.menu>

Whittingham Road, Halesowen I-B63 3NA, United Kingdom

+441216027777,+441216027829 - <http://www.halesowen.ac.uk/facilities/bistro-at-b63/>



On this webpage, you can find the **complete [menu](https://menuweb.menu)** of **Bistro At B63 (halesowen College Training** from Halesowen. Currently, there are **15** courses and drinks up for grabs.

Bistro At B63 (halesowen College Train



Vegetarian

PARMESAN ASPARAGUS

Drinks

DRINKS

Dessert

CHEESECAKE

Homemade Sauces

CHIMICHURRI

Japanese Specialties

CHICKEN TERIYAKI

Coffee

DECAF

These Types Of Dishes Are Being Served

CHICKEN

Hot Drinks

COFFEE

TEA

Restaurant Category

MEDITERRANEAN

ITALIAN

Ingredients Used



BACON

ONION

PARMESAN

GINGER

Bistro At B63 (halesowen College Training

Whittingham Road, Halesowen I-
B63 3NA, United Kingdom

Opening Hours:

Monday 08:15-22:00
Tuesday 08:00-22:00
Wednesday 08:00-15:30
Thursday 08:00-15:30
Friday 08:00-22:00

Made with [menuweb.menu](https://www.menuweb.menu)

Area	Rating	Notes
Overall effectiveness of teaching, learning and assessment	Good	Apprenticeship
Effectiveness of previous inspection	Good	

Summary of key findings

The provider is a good provider. Learners make good progress in improving their grasp and mathematical skills, and the proportion who successfully gain GCSE qualifications grade A to C/D or 4 in English and mathematics has increased. Learners demonstrate a desire to succeed in all chosen courses, through hard work, good behaviour and high attendance. Managers and leaders have managed the provider's resources very effectively. As a result, learners benefit from industry-standard courses that enhance the skills they develop. Managers and governors have established strong links with a range of partners to ensure that the curriculum offered by the provider meets local and regional priorities. The provider is a welcoming, friendly and safe environment where staff and learners

- Learners benefit from comprehensive support that ensures career expectations are realistic and achievable.
- Learners benefit from an effective learning support that meets their individual needs and enables them to make good progress.
- Teachers have good subject knowledge and high expectations that motivate and sustain learners' interest in learning.
- Teachers' reviews of learners' progress offer informal, if not consistently in-depth, what actions they have agreed learners as a result, and what progress are making towards achieving them.
- Support for vulnerable learners includes individualised support that ensures that they have the skills and attributes to support them into their intended destination.