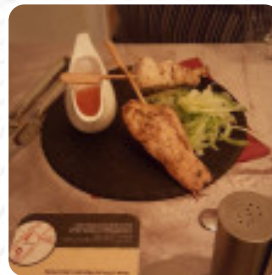




The Straw Bear B&b Menu

<https://menuweb.menu>

103 Drybread Road, Whittlesey, Fenland, United Kingdom
+441733351506,+441733203105 - <http://thestrawbear.co.uk/>



Here you can find the [menu](#) of **The Straw Bear B&b** in Fenland. At the moment, there are **17** meals and drinks on the card. The Straw Bear pub in Whittlesey offers a cozy dining experience with a rotating menu of delicious home-cooked meals. Perfect for visitors looking to explore nearby fishing spots like Decoy Lakes and Kingsland Fisheries, or try out diving at Gildenburg Dive Centre.

The Straw Bear B&b Menu



Drinks

BEER

Dessert

CHEESECAKE

From The Grill

RIBS

Wine

BOTTLE OF WINE

Restaurant Category

VEGAN

Indian

ROTI

CHICKEN CURRY

Hot Drinks

TEA

COFFEE

Ingredients Used

BEEF

CHEESE

PORK MEAT

These Types Of Dishes Are Being Served



ICE CREAM

TUNA STEAK

CHICKEN

MEAT

FISH

The Straw Bear B&b

103 Drybread Road, Whittlesey,
Fenland, United Kingdom

Opening Hours:

Sunday 12:00-22:00

Monday 16:00-21:00

Tuesday 16:00-21:00

Wednesday 16:00-21:00

Thursday 16:00-21:00

Friday 14:00-00:00

Saturday 07:00-00:00

Made with menuweb.menu

