

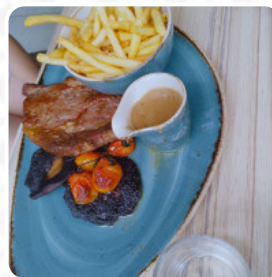


Pepy's At The Novotel Menu

<https://menuweb.menu>

Pepys Street, City of London, Westminster, United Kingdom

+442072666014, +442072666000 - https://restaurants.accor.com/gb/restaurant-6455_R001-elements-restaurant-london.shtml



A **comprehensive menu** of **Pepy's At The Novotel** from City of London, Westminster covering all **15** menus and drinks can be found here on the card. Novotel's newest 4-star New Generation hotel in London, conveniently located behind Paddington station, offers a stylish dining experience at Elements restaurant. The modern British menu is available in three serving sizes - taster, starter, and main. The restaurant features TV dining pods for lone diners, oversized lamps, and fresh flowers, making it the perfect spot for business meetings, corporate entertaining, or group dining. The hotel's gold, copper, and bronze facade, designed by Dexter Moren Associates, is easily recognizable from the station, making it an ideal choice for travellers looking for a well-connected and sophisticated dining option.

Pepy's At The Novotel Menu



Sandwiches

CLUB SANDWICH

Seafood

CALAMARI

Chicken

CHICKEN WINGS

Fish

SEA BASS

Steaks

RIBEYE STEAK

Chicken Wings

WINGS

Ingredients Used

CHOCOLATE

Drinks

DRINKS

BEER

These Types Of Dishes Are Being Served



PIZZA

BURGER

PASTA

SANDWICH

PANINI

CHICKEN

Pepy's At The Novotel

Pepys Street, City of
London, Westminster, United
Kingdom

Opening Hours:

Monday 6-12midnight
Tuesday 6-12midnight
Wednesday 6-12midnight
Thursday 6-12midnight
Friday 6-12midnight
Saturday 6-12midnight

Made with [menuweb.menu](https://www.menuweb.menu)

