

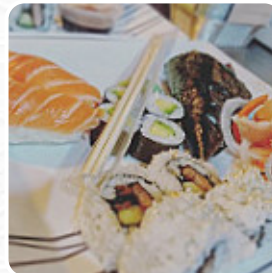
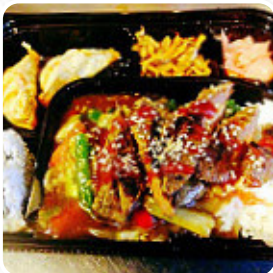


Osechi Japanese Street Food Menu

<https://menuweb.menu>

664 Bolton Road, Pendlebury, Salford, United Kingdom

+441613127968



Here you can find the [menu](#) of **Osechi Japanese Street Food** in Salford. At the moment, there are **17** meals and drinks on the menu. Nestled in Swinton, this restaurant offers a mixed experience for diners and takeaway enthusiasts alike. While the food has been lauded for its freshness and quality—especially sushi and mixed grill options—customer service has drawn significant criticism. Diners report instances of inattentive waitstaff, mixed-up orders, and long delivery waits. Despite these setbacks, loyal patrons appreciate the consistently delicious dishes and value for money. For those looking to explore a range of flavorful options without venturing too far, this establishment remains a popular choice, provided one is prepared for potential service hiccups. Overall, it presents a bittersweet dining experience.

Osechi Japanese Street Food Menu



Sushi Rolls

SUSHI

Seafood

PRAWN

Chicken

GRILLED CHICKEN

From The Grill

MIXED GRILL

Chicken Wings

WINGS

Noodle

RAMEN

Shakes

SHAKE

Special Noodles

UDON

Asian

GYOZA

Ingredients Used

BEEF

TUNA

These Types Of Dishes Are Being Served

LAMB CHOPS

NOODLES

LAMB

CHICKEN

SPICY TUNA

BURGER

Osechi Japanese Street Food

664 Bolton Road, Pendlebury,
Salford, United Kingdom

Opening Hours:

Sunday 16:00-23:00
Tuesday 16:00-23:00
Wednesday 16:00-23:00
Thursday 16:00-23:00
Friday 16:00-23:00
Saturday 16:00-23:00

Made with menuweb.menu

