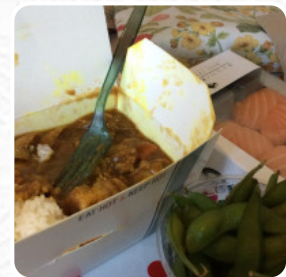




## Wasabi Victoria Station Menu

<https://menuweb.menu>

Unit 15, Room 10, City of London, Westminster, United Kingdom  
+442076300310 - <http://www.wasabi.uk.com/>



A comprehensive [menu](#) of Wasabi Victoria Station from City of London, Westminster covering all 23 menus and drinks can be found here on the card. While some have noted a decline in quality over the years, many still find Wasabi to be a convenient spot for a quick and tasty lunch. The small size of the restaurant can make it feel busy and rushed, but the service is quick. The food, ranging from sushi to Japanese curry, is generally well-received, with fresh ingredients and large portions at a reasonable price. Despite occasional missteps, the majority of diners seem to enjoy the experience and find Wasabi to be a reliable choice for a fast and filling meal, making it a popular spot for those on the go.

# Wasabi Victoria Station Menu



## Sushi Rolls

SUSHI

## Side Dishes

RICE

## Sushi

SASHIMI

## Drinks

DRINKS

## Chicken

CHICKEN KATSU

## Beef Dishes

BULGOGI

## Dessert

MOCHI

## Japanese Specialties

MISO SOUP

## Special Noodles

UDON

## Sides

WASABI

## Indian

CHICKEN CURRY

CHICKEN CURRY

## Restaurant Category

VEGAN

VEGETARIAN

## Ingredients Used

SALMON

PORK MEAT

MISO

TOFU

## These Types Of Dishes Are Being Served



NOODLES

MEAT

SALAD

SOUP

CHICKEN

# Wasabi Victoria Station Menu



## Wasabi Victoria Station

Unit 15, Room 10, City of  
London, Westminster, United  
Kingdom

**Opening Hours:**

Made with [menuweb.menu](https://menuweb.menu)

