



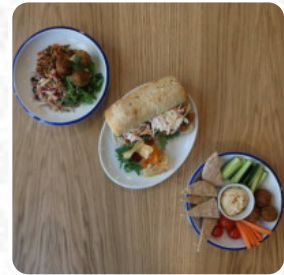
Queen Elizabeth Country Park Cafe Menu

<https://menuweb.menu>

A3, Waterlooville, PO8 0, United Kingdom, East Hampshire

+443707792030 -

<https://www.hants.gov.uk/thingstodo/countryparks/qecp/eat/beechnwood-kitchen>



A complete [menu](#) of Queen Elizabeth Country Park Cafe from East Hampshire covering all 15 meals and drinks can be found here on the menu. Located within the visitor's centre of Queen Elizabeth Country Park, Beechwood Kitchen underwent extensive remodeling and refurbishment in late 2019. The restaurant features an inviting interior seating area, an open kitchen, and a spacious outdoor patio on the forest's edge. Popular among outdoor enthusiasts like mountain bikers, dog walkers, runners, and families, we offer quick 'Grab & Go' options for those on the move as well as a comprehensive cafe-style menu for those looking to relax and enjoy. With a focus on serving healthy and locally sourced homemade food, we provide a welcoming atmosphere from breakfast through late afternoon. Additionally, we have two convenient kiosks - one on Butser Hill, the highest point of the Southdown's Way, and another recently refurbished kiosk within Juniper Carpark. Both kiosks offer a variety of quick snacks, drinks, and ice creams for visitors to enjoy.

Queen Elizabeth Country Park Cafe Menu



Desserts

CHOCOLATE CAKE

Soups

VEGETABLE SOUP

Sauces

BBQ

Hot Pies

SAUSAGE ROLL

Restaurant Category

VEGAN

Drinks

DRINKS

SMOOTHIES

Hot Drinks

COFFEE

TEA

These Types Of Dishes Are Being Served

BREAD

SOUP

Ingredients Used

CHOCOLATE

BACON

SAUSAGE

VEGETABLES

Queen Elizabeth Country Park Cafe

A3, Waterlooville, PO8 0, United Kingdom, East Hampshire

Opening Hours:

Sunday 09:00-16:00
Monday 10:00-16:00
Tuesday 10:00-16:00
Wednesday 10:00-16:00
Thursday 10:00-16:00
Friday 10:00-16:00
Saturday 09:00-16:00

Made with [menuweb.menu](https://www.menuweb.menu)

