

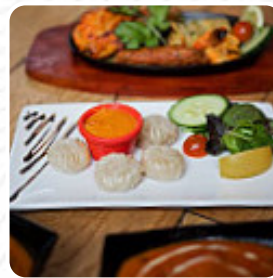


Kathmandu Palace Menu

<https://menuweb.menu>

10 Bradbourne Lane, Ditton, Aylesford, United Kingdom

+441732846433,+441732755385 - <http://kathmandupalace.co.uk/order/>



A comprehensive [menu](#) of Kathmandu Palace from Aylesford covering all 23 menus and drinks can be found here on the food list. Located in the heart of Kent, Kathmandu Palace is a family-run restaurant well-known for its warm hospitality and healthy cuisine. Guests have the opportunity to indulge in authentic Nepalese and Indian dishes any night of the week by booking a table at our inviting establishment. Nepal, the birthplace of Lord Buddha and home to the Gurkhas, offers a cuisine that is a delightful blend of flavors like ginger, garlic, cumin, coriander, and turmeric. Whether you're visiting for a casual meal or a special occasion, Kathmandu Palace can cater to functions and parties with advance booking.

Kathmandu Palace Menu



Alcoholic Drinks

RIESLING

Side Dishes

RICE

Lamb

ROGAN JOSH

Vegetarian Dishes

SPINACH PANEER

Dessert

KULFI

Popular Dishes

PILAU RICE

Breads & Rice

PESHWARI NAAN

Chef's Specials

NEPALESE

Lamb And Mutton Dishes

MUTTON ROGAN JOSH

Drinks

BEER

DRINKS

Restaurant Category

VEGETARIAN

DESSERT

Ingredients Used

ONION

VEGETABLES

Indian

NAAN

PLAIN NAAN

SAAG

CHICKEN CURRY

These Types Of Dishes Are Being Served

MEAT

LAMB

LAMB CHOPS

CHICKEN

Kathmandu Palace Menu



Kathmandu Palace

10 Bradbourne Lane, Ditton,
Aylesford, United Kingdom

Opening Hours:

Monday 12:00-14:30
Tuesday 12:00-14:30
Wednesday 12:00-14:30
Thursday 12:00-14:30
Friday 12:00-14:30
Saturday 12:00-14:30
Sunday 12:00-14:30

Made with menuweb.menu

 gallery image

