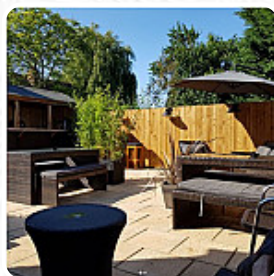
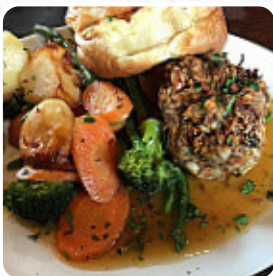




The Wheatsheaf Menu

<https://menuweb.menu>

306 London Rd, Leybourne, West Malling, United Kingdom
+441732842391 - <http://www.thewheatsheafkent.co.uk/>



Here you can find the [menu](#) of **The Wheatsheaf** in West Malling. At the moment, there are **19** courses and drinks on the food list. The Wheatsheaf is a charming family-run free house with a warm and inviting atmosphere. We offer a mouth-watering menu Tuesday through Saturday, with a delicious traditional roast dinner served on Sundays. Our dishes are made using locally sourced ingredients and prepared with love by our talented Head Chef. Come relax in our beer garden with a tasty meal and refreshing drink!.

The Wheatsheaf Menu



Starters & Salads

POTATO CHIPS

Vietnamese Specialties

BUN CHA

Fresh Juices

CARROT JUICE

Mexican-American Food

EMPANADAS

Drinks

BEER

DRINKS

Steaks

RIBEYE STEAK

RIB EYE STEAK

Hot Drinks

COFFEE

TEA

Restaurant Category

VEGETARIAN

BAR

Ingredients Used

PORK MEAT

SEAFOOD

These Types Of Dishes Are Being Served

TUNA STEAK

FISH

BURGER

MEAT

DESSERTS

The Wheatsheaf

306 London Rd, Leybourne, West
Malling, United Kingdom

Opening Hours:

Tuesday 12:00-23:00

Wednesday 12:00-23:00

Thursday 12:00-23:00

Friday 12:00-23:00

Saturday 12:00-23:00

Sunday 12:00-19:00

Made with menuweb.menu

