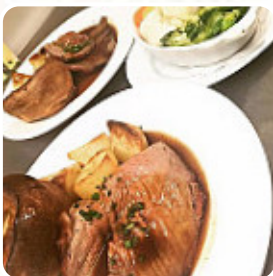




Washingpool Farm Menu

<https://menuweb.menu>

Washingpool Farm, West Dorset, United Kingdom
+441308458958 - <http://www.washingpool.co.uk/>



A comprehensive [menu](#) of **Washingpool Farm** from West Dorset covering all **22** meals and drinks can be found here on the card. The Farmer's Kitchen is a licensed cafe serving breakfasts, lunches, morning coffee, and afternoon tea. Using local ingredients and our own meat whenever possible, our dishes include cheddar and spinach souffle, lasagne with real chips, and homemade soups and sandwiches. The restaurant seats 30 with additional seating on the terrace on fine days and is open seven days a week.

Washingpool Farm Menu



Drinks

DRINKS

Potatoes

HASH BROWNS

Beverages

JUICES

Hot Drinks

COFFEE

Coffee

DECAF

DECAF COFFEE

Restaurant Category

VEGETARIAN

GLUTEN FREE

These Types Of Dishes Are Being Served



SALAD

PANINI

BREAD

SOUP

MEAT

TOSTADAS

Ingredients Used



CHEESE

FRUIT

VEGETABLES

MUSHROOMS

EGG

BACON

BUTTER

BEEF

Washingpool Farm

Washingpool Farm, West Dorset,
United Kingdom

Opening Hours:

Monday 09:00-16:00

Tuesday 09:00-16:00

Wednesday 09:00-16:00

Thursday 09:00-16:00

Friday 09:00-16:00

Saturday 09:00-16:00

Made with menuweb.menu

gallery image