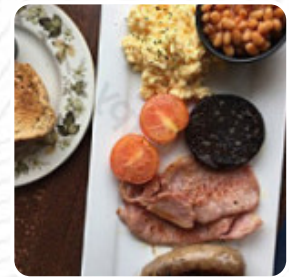
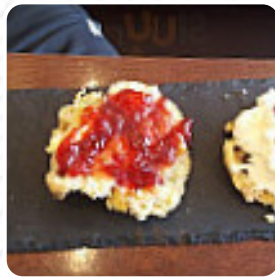




## The Fat Olive Menu

<https://menuweb.menu>

8 St Helens Road, West Lancashire, United Kingdom  
+441695577055,+441695571476



Here you can find the [menu](#) of **The Fat Olive** in West Lancashire. At the moment, there are **15** meals and drinks on the menu. Nestled in a charming locale, The Edge Café offers delightful home-cooked meals and a warm atmosphere that draws diners in. The varied menu includes tempting specials and delectable afternoon tea, celebrated for its generous portions and beautiful presentation. Guests rave about the attentive and friendly staff, ensuring a welcoming experience. Whether enjoying a hearty breakfast, fresh salads, or indulgent cakes, patrons appreciate the café's inviting ambiance and reasonable prices. With its homey charm and excellent service, The Edge Café is quickly becoming a must-visit destination for both locals and visitors alike.

# The Fat Olive Menu



## Sandwiches

CLUB SANDWICH

## Breakfast

SCRAMBLED EGGS

## Restaurant Category

GLUTEN FREE

## Salads

TUNA SALAD

COLESLAW

## Hot Drinks

COFFEE

TEA

## Ingredients Used

SEAFOOD

TUNA

MUSHROOMS

## These Types Of Dishes Are Being Served

SALAD

PANINI

TOSTADAS

SANDWICH

SOUP

---

## The Fat Olive

8 St Helens Road, West  
Lancashire, United Kingdom

### Opening Hours:

Monday 09:30-16:30  
Tuesday 09:30-16:30  
Wednesday 09:30-16:30  
Thursday 09:30-16:30  
Friday 09:30-16:30  
Saturday 09:30-16:30

Made with [menuweb.menu](https://www.menuweb.menu)

