

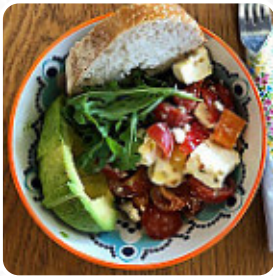


The Glasshouse Cafe Menu

<https://menuweb.menu>

United Kingdom, Mid Devon

+447800736337 - <https://www.facebook.com/theglasshouseatculmvalley/>



Here you can find the [menu](#) of **The Glasshouse Cafe** in Mid Devon. At the moment, there are **16** dishes and drinks on the menu. Nestled next to the Culm Valley Health Centre, The Glasshouse Café offers an inviting atmosphere with a menu spotlighting Mediterranean influences and locally sourced ingredients. Diners rave about the exceptional artisan coffee, complemented by delicious food, including standout dishes like crispy bacon ciabatta and refreshing halloumi salad. The outdoor seating is dog-friendly, and patrons appreciate the attentive, friendly service, creating a welcoming environment that feels like a retreat. With its cleanliness and vibrant ambiance, The Glasshouse Café stands out as a delightful spot to unwind and enjoy high-quality fare after appointments or simply for a casual meal.

The Glasshouse Cafe Menu



Salads

HALLOUMI SALAD

Non Alcoholic Drinks

WATER

Toast

AVOCADO TOAST

Drinks

DRINKS

Hot Drinks

COFFEE

Indian

CHAI

CHAI LATTE

Restaurant Category

MEDITERRANEAN

ITALIAN

Ingredients Used

BACON

AVOCADO

These Types Of Dishes Are Being Served

SALAD

TOSTADAS

Sandwiches

BLT

B.L.T.

B.L.T

The Glasshouse Cafe

United Kingdom, Mid Devon

Opening Hours:

Made with menuweb.menu

