

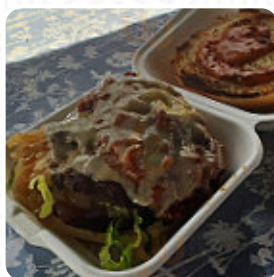


Wheatsheaf Pub Menu

<https://menuweb.menu>

28 Northgate End, Bishops Stortford, United Kingdom

+441279656697 - <https://www.facebook.com/thewheatsheafpublichouse/>



The menu of **Wheatsheaf Pub** from Bishops Stortford includes 17 dishes. On average, **dishes or drinks on [the menu](#)** cost about £10. The categories can be viewed on the menu below.

Wheatsheaf Pub Menu



Indian

CHICKEN CURRY

Soft Drinks

DIET COKE (CAN)

£2

Beers

BOTTLE CORONA

£4

Modifiers

COKE (CAN)

£2

Restaurant Category

BAR

Ingredients Used

CORNED BEEF

Drinks

BEER

DRINKS

Alcoholic Drinks



BOTTLE MALBEC (RED WINE) £19

BOTTLE MAGNERS £5

BOTTLE SPITFIRE £4

BOTTLE HOP HOUSE £4

BOTTLE PERONI £4

BOTTLE PROSECCO (SPARKLING £22

BOTTLE SAUVIGNON (WHITE WINE £19

BOTTLE PINOT GRIGIO (WHITE WINE) £17

BOTTLE MERLOT (RED WINE £17

Wheatsheaf Pub

28 Northgate End, Bishops
Stortford, United Kingdom

Opening Hours:

Sunday 12:00-19:00

Monday 15:00-22:00

Tuesday 15:00-22:00

Wednesday 15:00-22:00

Thursday 15:00-22:00

Friday 15:00-22:00

Saturday 12:00-22:00

Made with menuweb.menu

