

THE HAYWAIN

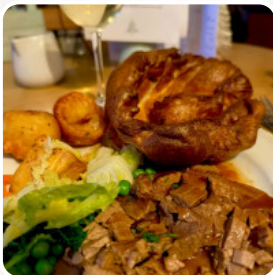
COUNTRY PUB
& KITCHEN



The Haywain Menu

<https://menuweb.menu>

The Haywain Bentley Road Little Bromley, Essex CO11 2PL, Manningtree, United Kingdom
+441206390004 - <http://www.thehaywain.co.uk/>



The restaurant from [Manningtree](#) offers **135** different **menus and drinks on the menu** at an average price of £7.

The Haywain restaurant has been receiving rave reviews, with customers praising the welcoming atmosphere, excellent service, and delicious food offerings. From specially prepared dishes for those with dietary restrictions to classic pub fare like fish and chips, the menu has something for everyone. The staff goes above and beyond to make diners feel comfortable and satisfied, with a personal touch that is appreciated by all. With a cozy fireplace, friendly staff, and a variety of tasty dishes, The Haywain is the perfect spot for a relaxing meal with friends or family. Whether you're looking for a top-notch sea bass or a mouth-watering [vegetarian](#) burger, this country pub has it all. So, if you're in the mood for a fantastic dining experience, head to The Haywain and enjoy a meal you won't soon forget.

The Haywain Menu



Non Alcoholic Drinks

WATER

Sandwiches & Hot Paninis

FALAFEL BURGER £10

Main Courses

SIRLOIN £17

Thai

CHICKEN SATAY

Vegetarian

CAULIFLOWER

Salad

CAESAR

Sandwiches

CHICKEN BURGER £11

A La Carte

SEARED POLENTA

Pork

PORK BELLY

Rice

RISOTTO

Starters & Salads

POTATO CHIPS

Indian

ROTI

Beef

RUMP

Mexican Dishes

TACOS £11

Pizzas

AMERICANA £2

Appetizers

CRISPY PORK BELLY

Arabische Sandwiches

HALLOUMI CHEESE

Bar Classics

FREE RANGE OMELETTE £3

Vegan Dishes

VEGAN BURGER

Skewers

PRAWNS WITH LIME AND CHILLI

American Food

EGGS BENEDICT

Kebabs

LAMB KOFTA

The Haywain Menu



Hot Drinks

TEA

Our Cuts - No Shortcuts

FLAT IRON £12

Additions

BACK BACON £4

From The Deli

SLICED HAM

3 Course

PLATTER OF SHARED DESSERTS

Turkish Specialties

AYRAN

Make It Boozy

ROSIE'S BLOODY MARY £6

Hot Drink

HOT CHOCOLATE £3

Frühstück

FULL £9

Crepes Dolci

PLAIN WITH MAPLE SYRUP £4

Breakfast Waffles

SPINACH AND FETA WAFFLE £5

Noshing

CRUSTY BREAD

Atholl Clasics

BEEF AND ALE PIE £10

Plates & Warm Dishes

PORK PIE

Steak & Frites*

FLAT IRON STEAK

Paddy And Scotts Coffee

DE-CAFF £2

Beverages, Chips, Cookies

CHIPS

Pizza - Special Small Ø 20Cm

BREAKFAST

Entrées

SPICY FALAFEL

FRIED PICKLES

Burger

BEEF BURGER £11

VEGETARIAN BURGER

Fish Dishes

FISH AND CHIPS

The Haywain Menu



FISH & CHIPS

Seafood

CRAB CAKES

SALT AND PEPPER SQUID

Breakfast

SAVOURY WAFFLE £6

FULL VEGAN £7

Drinks

BEER

GLASS OF WINE

Chicken

FRIED CHICKEN

PINEAPPLE CHICKEN

Fish

SEA BASS £11

SMOKED SALMON

Beef Dishes

PEPPERED BEEF

BRISKET

Starters

SMOKED SALMON, SMOKED TROUT
AND SHELL ON PRAWNS £7

GAME PATE £7

Salad Bowls

SEARED GOATS CHEESE

GRILLED HARISSA GLAZED, AUBERGINE

Bar Snacks

CHEDAR BISCUITS

CRUSTY BREADS AND BUTTER

2 Course

CONFIT OF DUCK THIGH

ROASTED AUBERGINE, HARISSA AND
POMEGRANATE CRUST

Breakfast Pudding Waffles

BANANA AND CINNAMON SUGAR £4

BLUEBERRIES AND YOGHURT £4

Salads



CHICKEN CAESAR

MIXED LEAF SALAD

CHICKEN SALAD

Coffee

CAPPUCCINO £3

ESPRESSO £2

LATTE £3

Sauces

BBQ

HOLLANDAISE

MAYO

KETCHUP

The Haywain Menu



Mains

BEER BATTERED HADDOCK AND CHIPS	£12
HAYWAIN PORK SAUSAGES	£11
PHEASANT, RED WINE, MUSHROOMS AND BACON	£11
CHARRED BEEF	
FILLET OF SEA BASS	

Dessert

CHEESECAKE
APPLE CRUMBLE
WAFFLE
PANNA COTTA
STICKY TOFFEE PUDDING

Restaurant Category

DESSERT
VEGETARIAN
GLUTEN FREE
VEGAN
BAR

Side Dishes

ROASTED CAULIFLOWER	£6
PICKLED ONIONS	
SAUTEED POTATOES	
FRESH VEGETABLES	
PORK SAUSAGE	£4
PICKLES	

These Types Of Dishes Are Being Served



SOUP	£5
MUSSELS	
SALAD	

FISH
BURGER
DESSERTS
LAMB
TUNA STEAK
BREAD
ROAST BEEF
PANINI
TOSTADAS

Ingredients Used



OLIVES
CHEDDAR CHEESE
FRUIT
POTATOES
PORK MEAT
EGG
DUCK
BEEF
BEEF BRISKET
MACKEREL
SAUSAGE
CHEESE
VEGETABLES
GARLIC
BACON
PARMESAN

The Haywain Menu

PEAS

BUTTER

MUSHROOMS

FETA

The Haywain

The Haywain Bentley Road Little
Bromley, Essex CO11 2PL,
Manningtree, United Kingdom

Opening Hours:

Thursday 12:00-15:00
Friday 12:00-15:00
Saturday 09:30-23:00
Sunday 09:30-18:00

Made with [Menu](#)

