

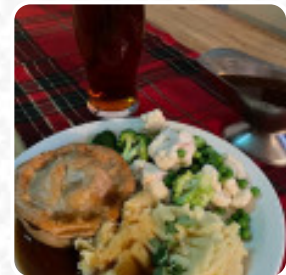
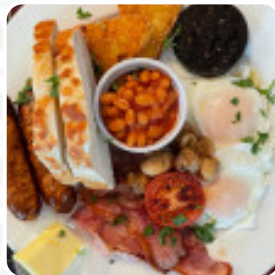


## Crown And Liver Menu

<https://menuweb.menu>

The Highway, Flintshire, United Kingdom

+441244639127,+441244531182 - <http://crownandliverhawarden.co.uk/index.html>



A complete [menu](https://menuweb.menu) of Crown And Liver from Flintshire featuring all 33 dishes and drinks can be found here on the menu. Nestled within the charming landscapes of Ewloe, two pubs showcase vastly different dining experiences. The Glynne Arms shines with a welcoming atmosphere, delicious food, and friendly staff, making it a favored stop for patrons. Conversely, the Crown and Liver struggles with cleanliness, unfriendly service, and inappropriate staff attire, disappointing many visitors. While some locals treasure the lively atmosphere and regular events at the Crown and Liver, reports of poor maintenance and awkward encounters suggest a need for significant improvements. Ultimately, the Glynne Arms emerges as the preferred destination for a delightful meal and pleasant ambiance.

# Crown And Liver Menu



## Alcoholic Drinks

PROSECCO

## Main Courses

LASAGNA

## Fish Dishes

FISH & CHIPS

## Side Dishes

POTATO CHIPS

## Drinks

BEER

## Starters & Salads

FRENCH FRIES

## Chicken

CAJUN CHICKEN

## Appetizer

LOADED FRIES

## Fish

SEA BASS

## Steaks

RIBEYE STEAK

## Indian

CHICKEN CURRY

## Mexican-American Food

EMPANADAS

## Restaurant Category

BAR

## Burger

BACON BURGER

CHEESEBURGER

## Hot Drinks

COFFEE

TEA

## These Types Of Dishes Are Being Served

FISH

ROAST BEEF

CHICKEN

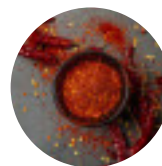
PANINI

BURGER

LAMB

MEAT

## Ingredients Used



CHILI

PORK MEAT

BACON

BEEF

MUSHROOMS

PRAWNS

SEAFOOD

# Crown And Liver Menu



CHEESE

---

## Crown And Liver

The Highway, Flintshire, United Kingdom

**Opening Hours:**  
Sunday 12:00-23:00  
Monday 12:00-23:00  
Tuesday 12:00-23:00  
Wednesday 12:00-23:00  
Thursday 12:00-23:00  
Friday 12:00-23:00  
Saturday 12:00-23:00

Made with [Menu](#)

