



On this webpage, you will find the **complete [menu](#) of The Cliff House** from [New Milton](#). Currently, there are **50** dishes and drinks available. The Cliff House restaurant offers a fantastic dining experience with a warm welcome, friendly staff, and great Alpine cuisine. The outdoor space, views, and ambiance create a lovely atmosphere for a meal. The food is outstanding, especially the chickenburger and venison, with options for all tastes. Service is excellent, with special occasions celebrated in style. The Sunday roast is highly recommended, with delicious dishes and beautiful sunset views. Prices are higher but well worth it for the overall experience. A great choice for a special dinner or celebration.

The Cliff House Menu



Alcoholic Drinks

SAUVIGNON BLANC

Entrées

PRAWN COCKTAIL

Pasta

SEAFOOD RISOTTO

Burger

CHICKENBURGER

Fish Dishes

FISH & CHIPS

Drinks

BEER

Rice

RISOTTO

Appetizer

TEMPURA

Fish

SEA BASS

Spirits

MARTINI

American Food

HOT DOG

Mexican-American Food

EMPANADAS

Restaurant Category

BAR

Salads

HALLOUMI SALAD

COBB SALAD

Seafood

SHRIMP TEMPURA

PRAWN

Hot Drinks

TEA

COFFEE

Coffee

ESPRESSO

LATTE

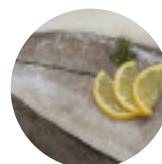
Dessert

CHOCOLATE MOUSSE

PANNA COTTA

STICKY TOFFEE PUDDING

Ingredients Used



HADDOCK

TUNA

PORK MEAT

BEEF

CHEESE

The Cliff House Menu



- SEAFOOD
- DUCK
- CHOCOLATE
- SALMON
- PRAWNS
- MUSHROOMS

These Types Of Dishes Are Being Served

- ROASTED CHICKEN
- LAMB



- SALAD
- MUSSELS
- CHICKEN
- TOSTADAS
- BURGER
- SOUP
- MEAT
- ROAST BEEF
- PANINI
- FISH
- BREAD
- ICE CREAM

The Cliff House

Marine Drive West, Barton On Sea, New Milton, United Kingdom

Opening Hours:
Monday 12:00-23:00
Tuesday 12:00-23:00
Wednesday 12:00-23:00
Thursday 12:00-23:00
Friday 12:15-23:00
Saturday 12:00-23:00
Sunday 12:00-23:00

Made with [Menu](#)

