



## N'dulge Menu

<https://menuweb.menu>

8-10 St. Andrew Street, Dumfries I-DG1 1BS, United Kingdom

+441387257260 - <https://ndulgedumfries.co.uk/ordernow>



On this webpage, you will find the **complete menu** of N'dulge from [Dumfries](#). Currently, there are **48** menus and drinks available. **\*\*Restaurant Review: A Mixed Experience with Delightful Highlights\*\*** In a cozy and beautifully arranged setting, this restaurant offers a warm ambiance ideal for a chilly day. Despite some delays in service, many patrons recognized the staff's friendliness, with several members praised for their exceptional service. The food presentation was commendable, although consistency in quality seems to vary. The establishment also hosts appealing events, such as drag performances, which receive high acclaim. Overall, while there are areas for improvement—especially in service speed—the combination of delightful food, vibrant atmosphere, and attentive staff creates an inviting experience worth exploring.

# N'dulge Menu



## Entrées

SHRIMP COCKTAIL

## Pasta

SPAGHETTI CARBONARA

## Pizza

PROSCIUTTO DI PARMA

## Main Courses

NACHOS

## Thai

CHICKEN SATAY

## Side Dishes

MASHED POTATOES

## Drinks

BEER

## Starters & Salads

FRENCH FRIES

## Fish

SEA BASS

## Indian

PEPPER CHICKEN

## Asian Specialties

SATAY

## Asian

EGG ROLL

## Mexican-American Food

EMPANADAS

## Chicken

CHICKEN STRIPS

ROAST CHICKEN

## Dessert

KEY LIME PIE

CHEESECAKE

## Hot Drinks

TEA

COFFEE

## Ingredients Used



HAM

MOZZARELLA

BACON

CHEESE

SALMON

SEAFOOD

PORK MEAT

PRAWNS

MUSHROOMS

CHOCOLATE

BEEF

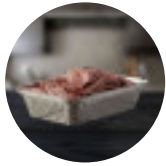
PESTO

EGG

# N'dulge Menu



## These Types Of Dishes Are Being Served



ROAST BEEF

SOUP

BURGER

SALAD

PASTA

ICE CREAM

NOODLES

SPAGHETTI

LAMB

FISH

PANINI

MEAT

PIZZA

TURKEY

CHICKEN

## N'dulge

8-10 St. Andrew Street, Dumfries  
I-DG1 1BS, United Kingdom

### Opening Hours:

Thursday 17:00-22:00

Friday 17:00-03:00

Saturday 13:00-03:00

Sunday 13:00-20:00

Made with [Menu](#)

