

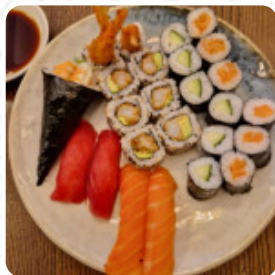


Suzu Menu

<https://menuweb.menu>

170-172 Hammersmith Road, Hammersmith And Fulham, United Kingdom, Hammersmith and Fulham

+442087411101



On this webpage, you will find the **complete [menu](#) of Suzu** from Hammersmith and Fulham. Currently, there are **46** menus and drinks available. Nestled discreetly along Hammersmith Road, Suzu offers a delightful escape for sushi lovers with its unique dishes and engaging ambiance. Despite its compact space, the restaurant boasts an impressive range of [vegetarian](#) options alongside an exceptional selection of [sushi](#), praised for the freshness and quality of its fish. Guests revel in the atmosphere, which is enhanced by upbeat music and friendly service. In addition to dining, Suzu's sushi classes led by the knowledgeable Makiko have garnered accolades, making it an excellent choice for both seasoned sushi aficionados and beginners. Suzu promises a memorable culinary experience worth discovering.

Suzu Menu



Sushi Rolls

SUSHI

Pasta Dishes

CHICKEN NOODLES

Gnocchi

GNOCCHI

Sandwiches

CALIFORNIA SANDWICH

Side Dishes

RICE

Drinks

BEER

Dessert

MOCHI

Mexican Dishes

BURRITO

Japanese Specialties

MISO SOUP

Noodle

RAMEN

Hot Drinks

TEA

Asian

GYOZA

Sushi Bar Entrees

CHIRASHI

Salads

SEAWEED SALAD

POTATO SALAD

Seafood

OCTOPUS AND ORZO

PRAWN

Sushi

SASHIMI

CALIFORNIA ROLL

Chicken

FRIED CHICKEN

CHICKEN KATSU

Appetizer

POKE BOWL

TEMPURA

Indian

CHICKEN CURRY

CHICKEN CURRY

Restaurant Category

DESSERT

VEGAN

Suzu Menu

VEGETARIAN

These Types Of Dishes Are Being Served



FISH

CHICKEN

SALAD

ICE CREAM

NOODLES

SPICY TUNA

MEAT

SOUP

Ingredients Used



MISO

TUNA

PORK MEAT

EEL

SHRIMP

SALMON

AVOCADO

ONION

GINGER

CUCUMBER

Suzu

170-172 Hammersmith Road,
Hammersmith And Fulham,
United Kingdom, Hammersmith
and Fulham

Opening Hours:

Monday 11:30-15:00
Tuesday 11:30-15:00
Wednesday 11:30-15:00
Thursday 11:30-15:00
Friday 11:30-15:00

Made with [Menu](#)

