

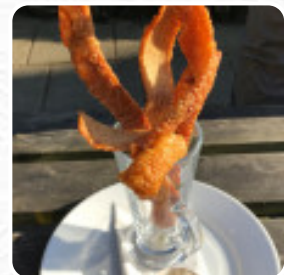
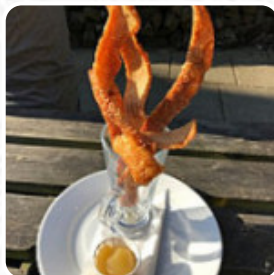
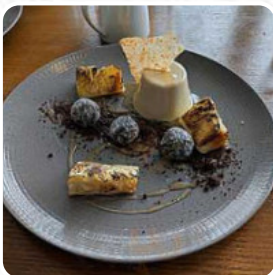


The Bell Menu

<https://menuweb.menu>

Waltham St. Lawrence, Windsor and Maidenhead, United Kingdom

+441189341788



On this site, you will find the **complete [menu](https://menuweb.menu) of The Bell** from Windsor and Maidenhead. Currently, there are **32** dishes and drinks available. Nestled by the river, The Boathouse has emerged as a local gem after a comprehensive refurbishment, offering a delightful blend of history and modern charm. Patrons rave about the friendly staff and varied menu, featuring well-prepared Sunday roasts and delectable desserts. The cozy ambiance makes it an ideal dining spot for families and friends alike. Despite some varied opinions on the food quality at other nearby pubs, The Boathouse consistently impresses with its exceptional service and genuinely enjoyable meals. While parking may be limited, the restaurant's enchanting views and welcoming atmosphere make every visit worthwhile.

The Bell Menu

Entrées

TOMATO CREAM SOUP

Fish Dishes

FISH AND CHIPS

Drinks

BEER

Starters & Salads

POTATO CHIPS

Appetizer

TARTARE

Beef

RUMP

Hot Drinks

COFFEE

Salads

SALAD

TOMATO SALAD

TOMATO SALAD

Restaurant Category

BAR

DESSERT

VEGETARIAN

Ingredients Used



BEEF

GARLIC

PORK MEAT

PEAS

PARMESAN

MOZZARELLA

BACON

SAUSAGE

These Types Of Dishes Are Being Served



BREAD

LAMB

PANINI

TUNA STEAK

PIZZA

FISH

APPETIZER

ICE CREAM

BURGER

SALAD



The Bell Menu



The Bell

Waltham St. Lawrence, Windsor
and Maidenhead, United
Kingdom

Opening Hours:
Monday 12:00 -23:00
Tuesday 12:00 -23:00
Wednesday 12:00 -23:00
Thursday 12:00 -23:00
Friday 12:00 -00:00
Saturday 12:00 -00:00
Sunday 12:00 -22:30

Made with [Menu](#)

